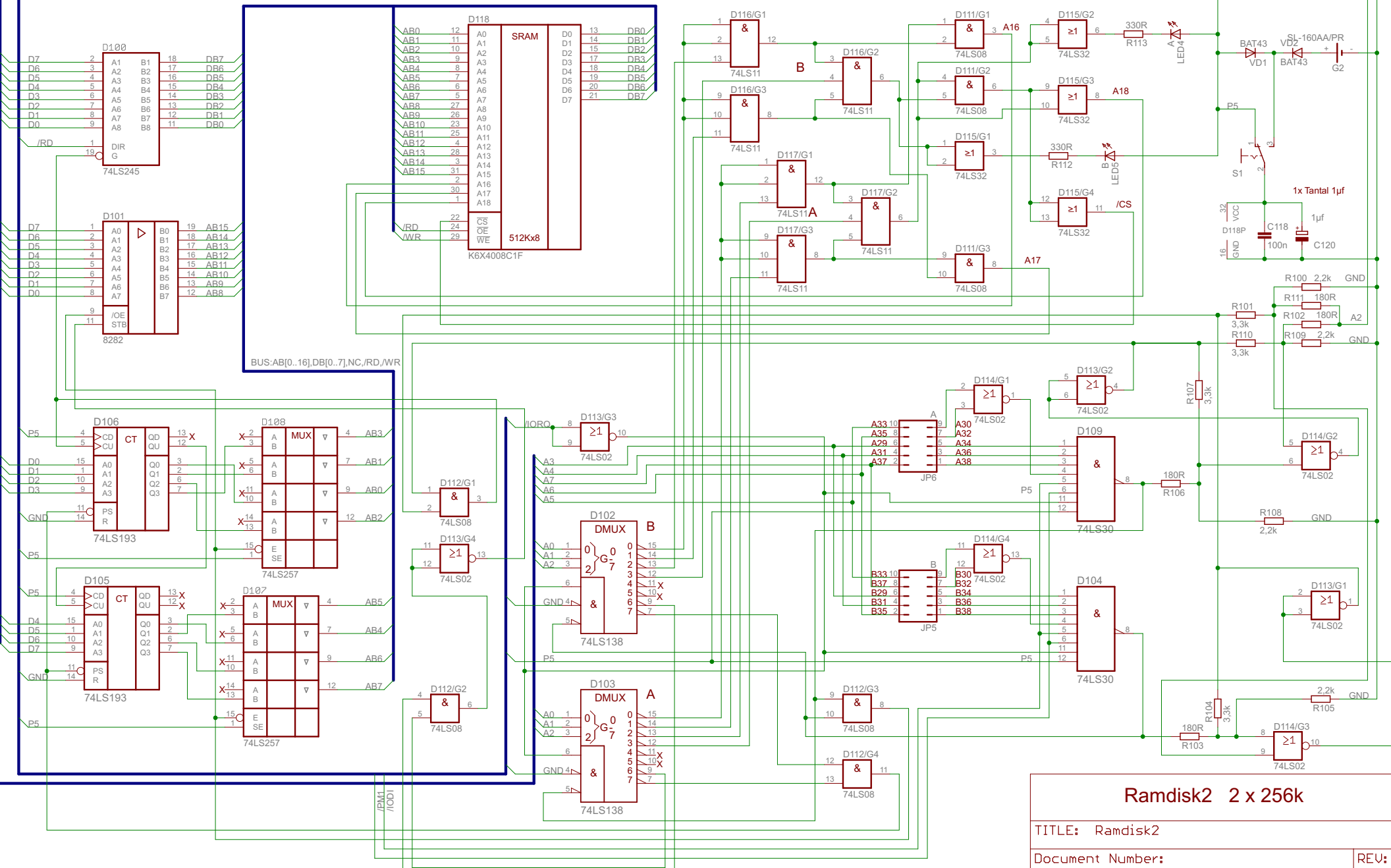


DATENBUS:D[0..7]

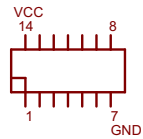
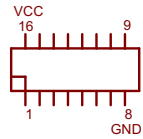
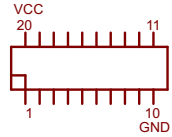
ADRESSBUS:A[0..17]

STEUERBUS:GND,P5,P12,N5,N12,WR,/MREQ,/IEO,/RESET,TAKT,/IODI,/NMI,/WAIT,/RFSH,/PM1,/BUSAK,/RD,/MEMDI,/IORQ1,/BUSRQ,/INT,/IORQ,CASG,/HALT,PM1,/BS,/RESET-T,/DK10,/DK13,MREQ,TEST,/RESET-C,/IOSEL1,ROM-A,E



Ramdisk2 2 x 256k

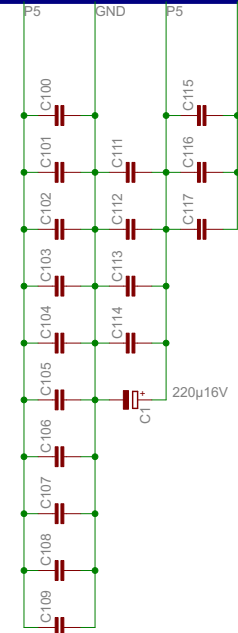
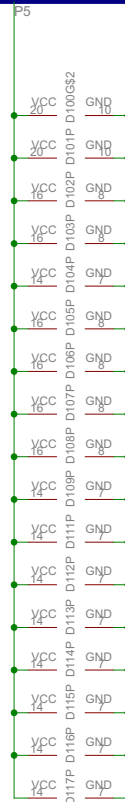
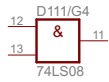
TITLE: Ramdisk2	
Document Number:	REV:
Date: 07.12.2016 10:24:44	Sheet: 1/2



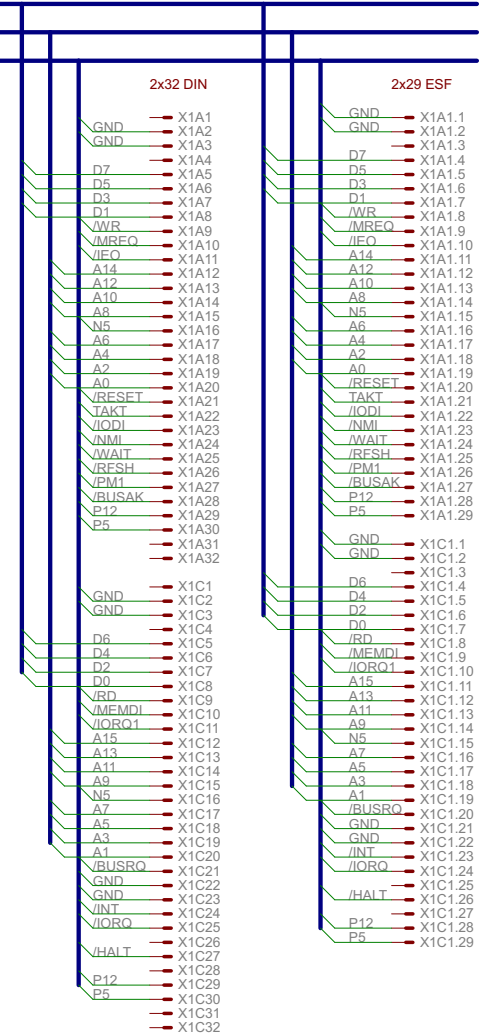
74LS245
DS8282

74LS138
DL193

DL008
DL002
DL032
DL030



17 x 100n



Festgelegte Adressen im System			
JP6 = A =	98H	JP5 = B =	58H
29 - 34		29 - 34	
31 - 36		31 - 36	
33 - 30		33 - 30	
35 - 32		35 - 38	
37 - 38		37 - 32	

<h2>Ramdisk2 2x256</h2>	
TITLE: Ramdisk2	
Document Number:	REV:
Date: 07.12.2016 10:24:44	Sheet: 2/2